

# CHUBBSAFES PRIMUS / E-LOCK PS600

## INSTRUCTION MANUAL



# Table of content

|                                                                                                                       |          |
|-----------------------------------------------------------------------------------------------------------------------|----------|
| <b>1. OPENING THE LOCK</b> .....                                                                                      | <b>3</b> |
| 1.1 Opening using the user code or the master code.....                                                               | 3        |
| 1.2 Opening using a second code (this fonctionnality is valid when the user code and the master code are active)..... | 3        |
| 1.2.1 Activate the fonctionnality.....                                                                                | 3        |
| 1.2.2 Opening of the lock.....                                                                                        | 3        |
| 1.2.3 Desabling of the fonctionnality.....                                                                            | 3        |
| <b>2. PROGRAMING</b> .....                                                                                            | <b>4</b> |
| 2.1. Master-code programming:.....                                                                                    | 4        |
| 2.2. User-code programming (using master-code).....                                                                   | 4        |
| 2.3. User-code programming (not using master-code) .....                                                              | 4        |
| 2.4. Cancelation of user-code .....                                                                                   | 5        |
| 2.5. Programming of Time delay and Opening window. ....                                                               | 5        |
| 2.6. Sound Off/ On .....                                                                                              | 6        |
| <b>3. INSUFFICIENT POWER SUPPLY</b> .....                                                                             | <b>6</b> |
| <b>4. EMMERGENCY OPENING.</b> .....                                                                                   | <b>6</b> |
| <b>5. BATTERY INSTALLATION OR REPLACEMENT.</b> .....                                                                  | <b>7</b> |

## 1. OPENING THE LOCK.

### 1.1 Opening using the user code or the master code

- Press«**ON**» – single acoustic signal and green LED;
- Enter master or user code, consisting of 6...8 symbols (master code set up in the factory, 1-2-3-4-5-6, the user code is not activated);
- Press«**ENTER**». After the green LED is activated the lock is ready to open during 5 seconds.

### 1.2 Opening using a second code (this functionality is valid when the user code and the master code are active.

#### 1.2.1 Activate the functionality

- Press “ON”
- Press “ENTER”;
- Press “7”;
- Press “ENTER” (if the user code has not been activated the lock will be deactivated after a Bip and red LED);
- Enter the master code and press and press “ENTER”;

#### 1.2.2 Opening of the lock

- Press “ON”
- Enter the master code and press and press “ENTER”;
- Within 60 secondes enter the user code and press “ENTER” until the green LED.

#### 1.2.3 Desabling of the functionality

- Press “ON”
- Press “ENTER”
- Press “8”
- Press “ENTER”
- Enter the master code and press “ENTER”

Should the master code or the user code wrong or the user code not set yet, the lock will be deactivated after a Bip and the red LED.

Should an incorrect master or user code be entered 3 times, then the lock will be locked outfor 5 minutes after a Bip and red LED.

## 2. PROGRAMING

### 2.1. Master-code programming:

- Press «**ON**»;
- Press «**ENTER**»;
- Press «**1**»;
- Press «**ENTER**»;
- Enter valid master-code and press «**ENTER**»;
- Enter new master-code (6 symbols minimum, 8 symbols maximum) and press«**ENTER**»;
- Enter new master-code again and press «**ENTER**».

Visual and acoustic sygnals are the same as when opening. The correct input of the valid or new master-code – double acoustic signal and green LED. Incorrect input of the actual or new master-code –(less than 6 symbols or the incorrect input when repeated). – single long beep and red L.E.D.. The incorrect key sequence is indicated by by single long beep and red LED. After the incorrect input – repeat the input, pressing «**#**»

### 2.2. User-code programming (using master-code)

- Press «**ON**»;
- Press «**ENTER**»;
- Press «**2**»;
- Press «**ENTER**»
- Enter valid master-code and press «**ENTER**»
- Enter user-code (6 digits minimum and 8 digits maximum) and press «**ENTER**»
- Enter user-code again and press «**ENTER**»

### 2.3. User-code programming (not using master-code)

- Press «**ON**»;
- Press «**ENTER**»;
- Press «**3**»;
- Press «**ENTER**»;
- Enter valid user-code and press«**ENTER**»;
- Enter new user-code (6 minimum, 8 maximum) and press «**ENTER**»;
- Enter new user code again and press «**ENTER**».

## 2.4. Cancellation of user-code

- Press «**ON**»;
  - Press «**ENTER**»;
  - Press «**0**»;
  - Press «**ENTER**»;
  - Enter valid master-code and press«**ENTER**»;
- The user code can only be cancelled by a valid master-code.

## 2.5. Programming of Time delay and Opening window.

The time delay (TD) function refers to the period of time which must elapse before the lock can be opened.

The opening window (OW) is the period in which the lock may be opened after the TD has elapsed. Any valid code can be provided with a TD or OW function.

- Press «**ON**»;
  - Press «**EN**»
  - Press «**6**»;
  - Press «**ENTER**»
  - Enter valid user code or master-code and press «**#**»
  - Enter a 2-digit number that will stand for the TD (01 -99 minutes) and a number for the OW (1-9 minutes).
- For example: 092 – 9 minutes for TD, and 2 minutes – for the OW.
- Press «**EN**»;

### Opening with the help of the programmed TD and OW.

- Press «**ON**»;
- Enter valid user-code or master-code: green visual LED
- Automatic start of TD: red visual and acoustic signal and every 5 seconds
- After end of TD – acoustic signal
- Automatic start of OW: green visual and acoustic signal every 5 seconds
- Enter valid code once again during OW: green visual signal
- If the code is correct the device works as indicated step 3.1.1 or 3.1.2.

By pressing «**ENTER**» during TD period this function is interrupted. The entire sequence must then be repeated in order to open again.

### Cancellation of programmed TD/OW

- Press «ON» ;
- Press«ENTER» ;
- Pres «6» ;
- Press«ENTER»;
- input valid user or master code and press «ENTER»;
- Input **0-0-0** for cancelation of TD and OW.
- Press «ENTER»;

### 2.6. Sound Off/ On

- Press «ON» ;
  - Press «ENTER» ;
  - Press «5»;
  - Press «ENTER»;
  - Input the actual master-code and press «ENTER»;
- Acoustic and light signals are the same as when programming the master-code.

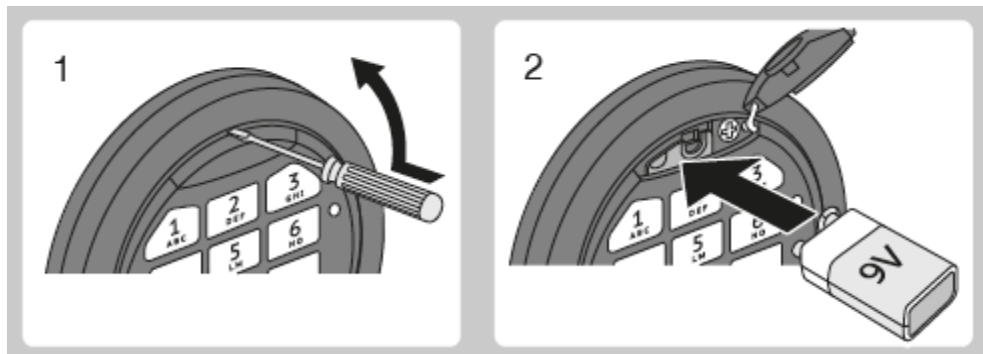
## 3. INSUFFICIENT POWER SUPPLY

Low voltage is shown by the red LED and quintuple acoustic signal. There is still sufficient energy for opening.

It is forbidden to Press «ENTER» for changing the codes. It is indicated by single long beep and red LED.

## 4. EMMERGENCY OPENING.

Open the little cover located above the keys of the keypad, connect an extra 9Volts battery and enter the valid user or master code.



## 5. BATTERY INSTALLATION OR REPLACEMENT.

- Remove the battery container located top of the door.
- Remove the old battery or install and connect the new battery.

